

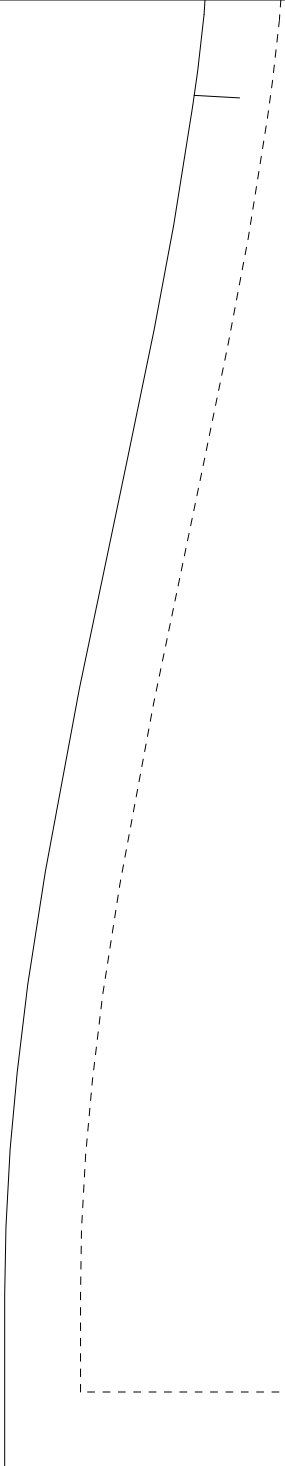
VM Stoffbruch

1 x im Bruch
schneiden

Weste
Vorde
---4

C

|



T

C

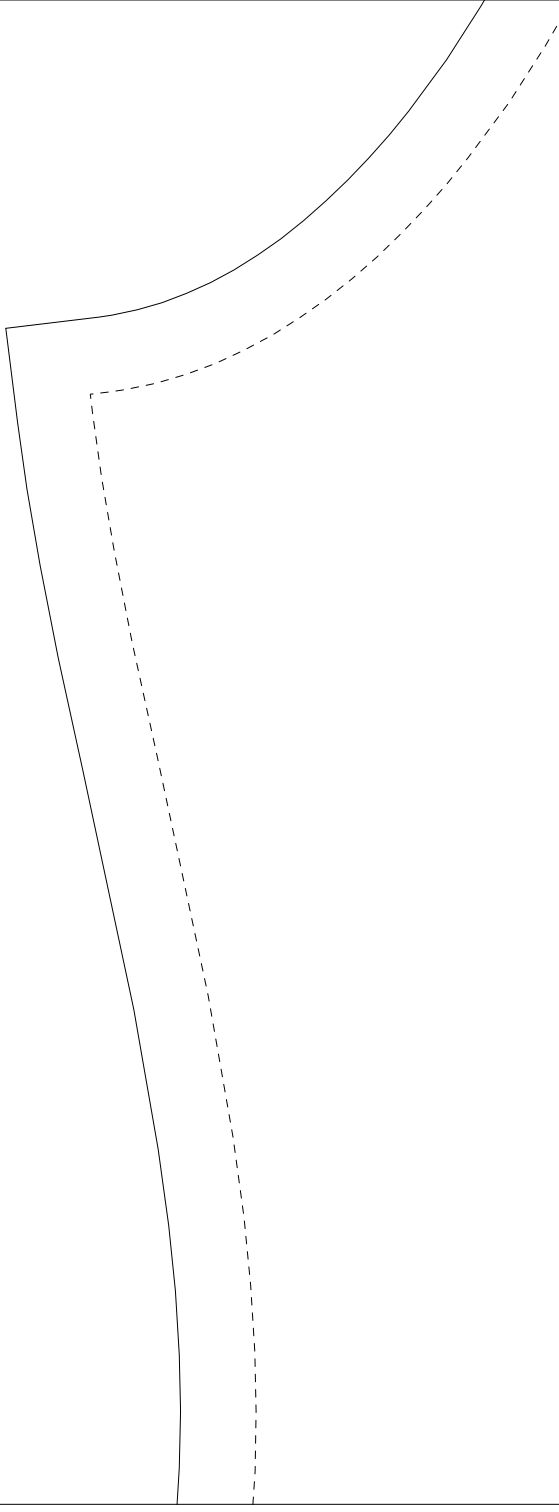
1 x im Bruch
schneiden

WE
RÜ
-

HM

n und Fdl .

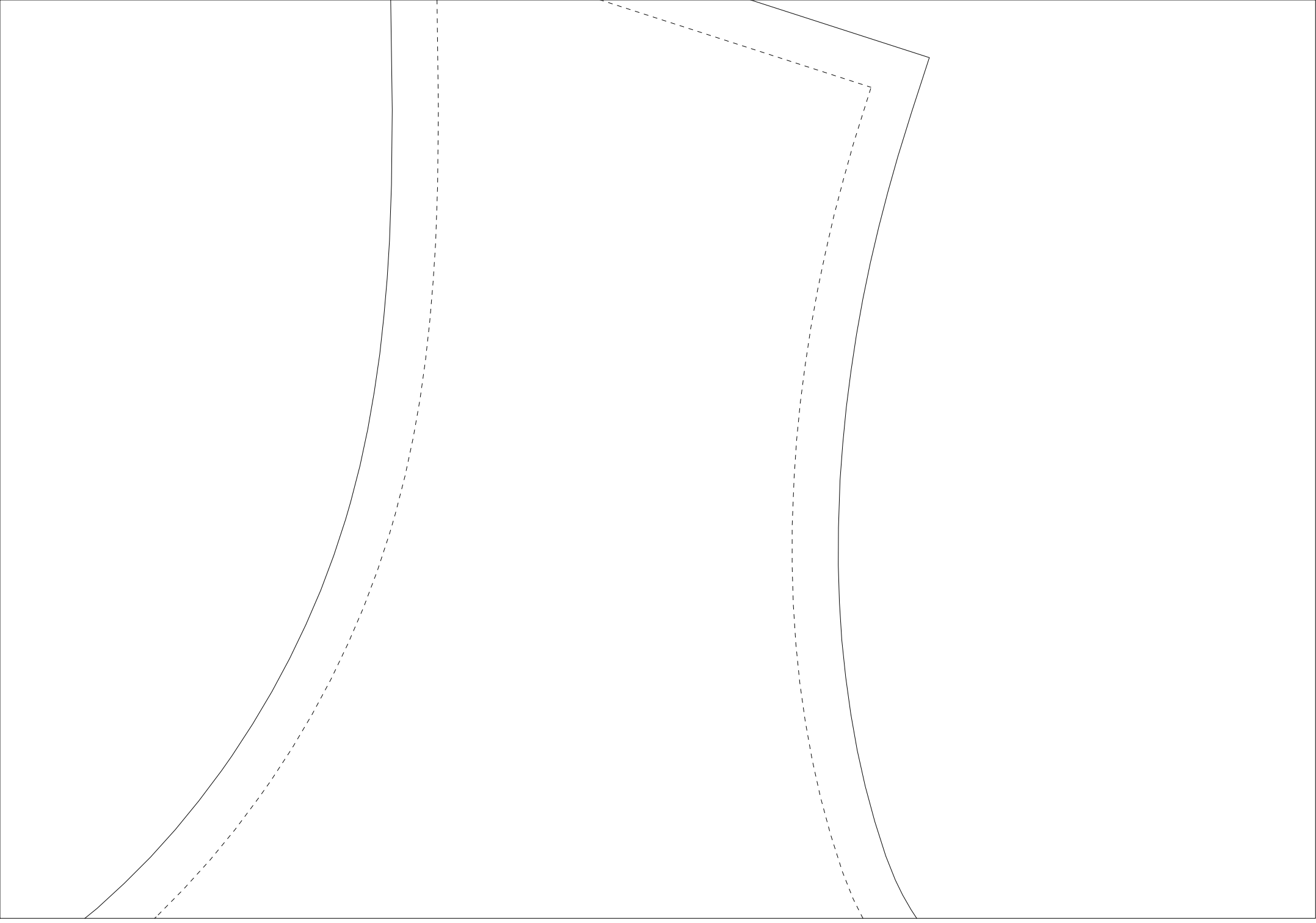
Ladies
rteil
Ø_Ø



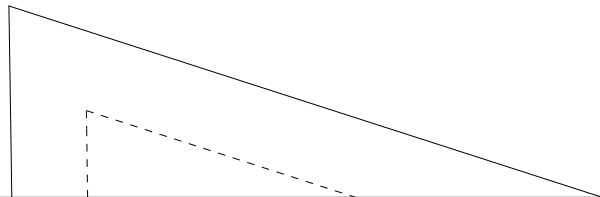
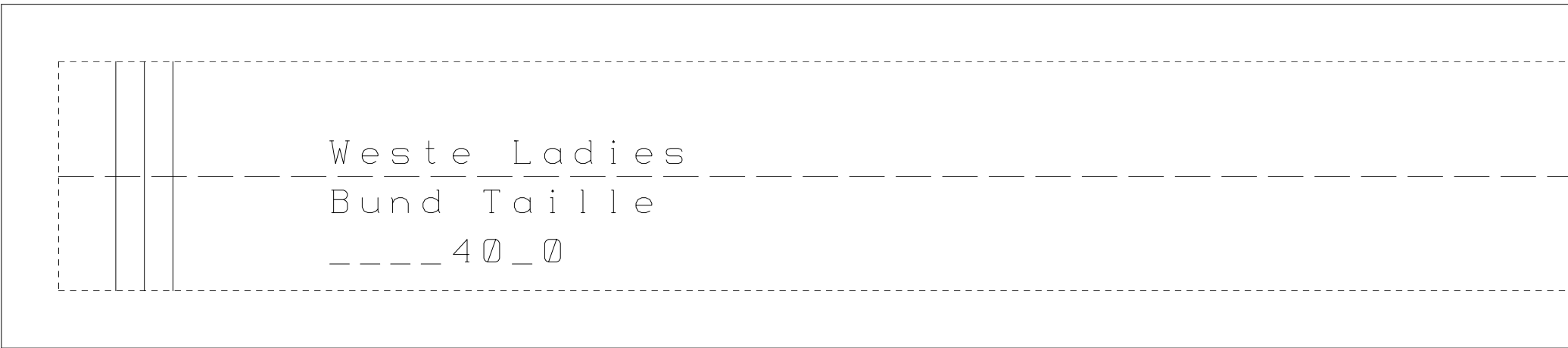
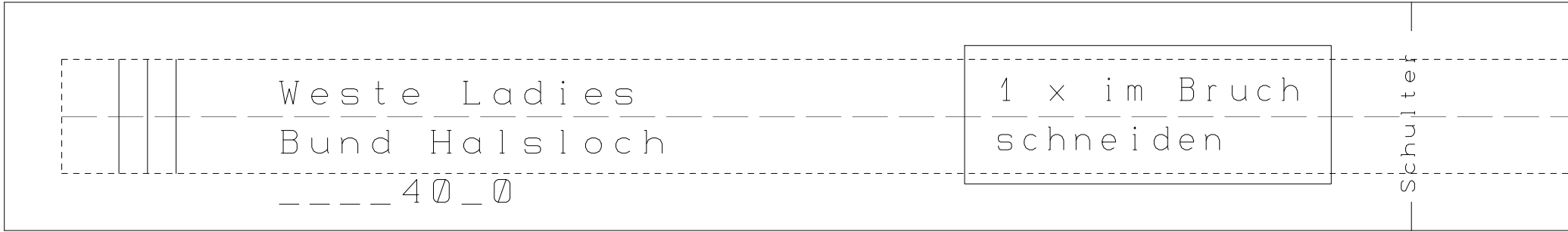
erste Ladies
ruckenteil

40_0

Stoffbruch und Fdl.







HM Bruch

2 x schneiden

1 x im Bruch
schneiden

Seite Bruch